

UHD-200 SUPER DUTY RISER STAND

8 TON/16,000LBS CAPACITY

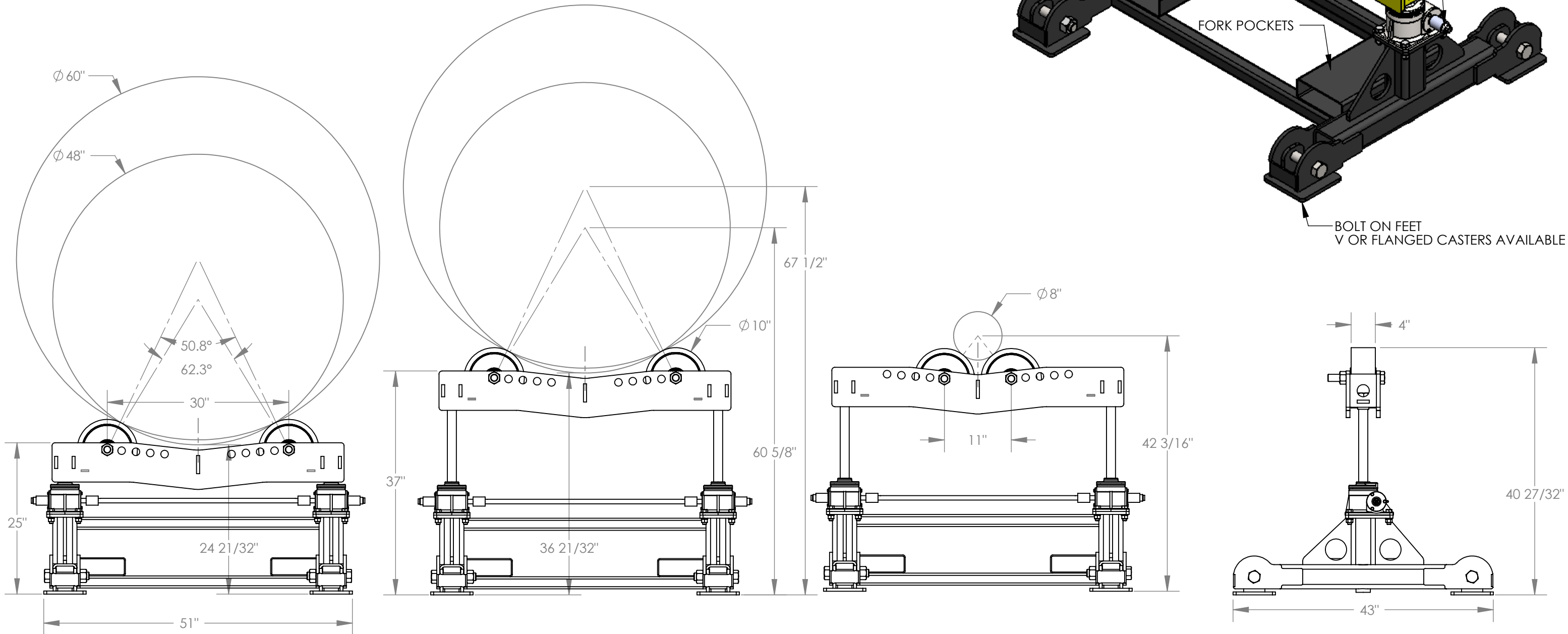
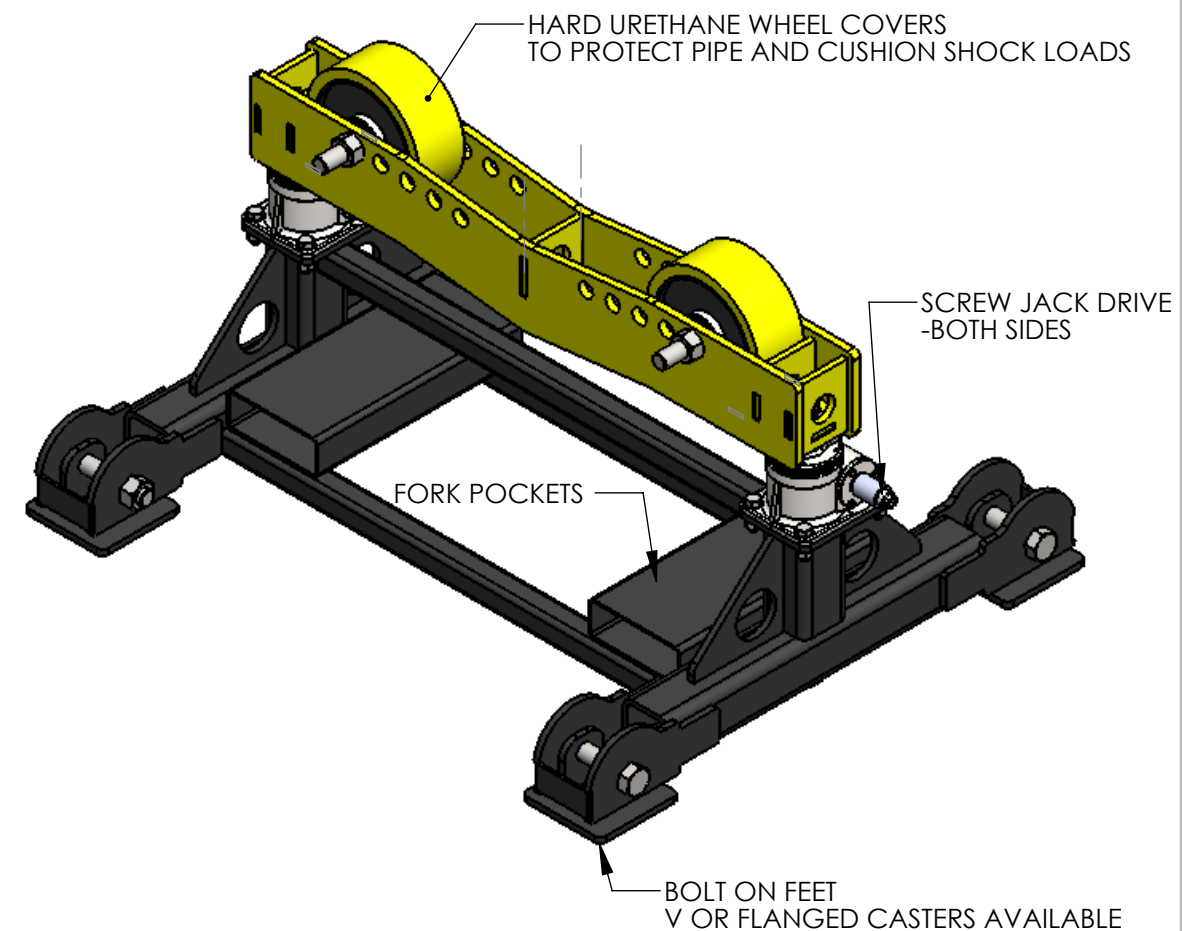
DIAMETER RANGE - 8" - 60" PIPE*

SCREW JACK FINE ADJUST (12') FOR HEAVY PIPE LEVELLING - HAND CRANK OR DRILL ATTACHMENTS

MODULAR FOOT DESIGN - STANDARD SELF LEVELLING FEET OR TRACK MOUNT CASTERS

HEAVY DUTY URETHANE SUPPORT WHEELS (STEEL OPTIONAL)

***IMPORTANT NOTE:** ONLY FOR USE ON HARD LEVEL GROUND
 USE CAUTION WHEN USING THESE STANDS FOR DIAMETERS LARGER THAN 48"
 DO NOT ROTATE PARTS WITH OFFSET CENTER OF MASS OR ANY SIDE LOADS
 ALWAYS LOAD STANDS IN LOWEST POSSIBLE POSITION
 REVIEW OPERATORS MANUAL BEFORE USE



NOTE:

				UNLESS OTHERWISE SPECIFIED ALL DIMENSIONS ARE IN INCHES		DRAWN BY TWR		DATE DRAWN OCT 20/10		4747 76 AVE PH: (780) 466-6658 FAX: (780) 469-6710 EDMONTON, AB T6B 0A3	
				DEFAULT TOLERANCES		WEIGHT (LBS) 578.47		FINISH		DESCRIPTION UHD-200 SJ RISER STAND, 16000LB CAP	
				LINEAR DIMENSIONS: X.X=±.030" X.XX=±.015" X.XXX=±.005" FRACTIONAL: ±1/16" SAW: +0, -3/32"		MATERIAL SPECIFICATION		STOCK DESCRIPTION		FILE UHD-200-1	
				HOLES: +1/64", -0 ANGULAR: ±1/2° CONCENTRICITY: ±.010" TIR MACHINE FINISH: 125 RMS MACHINE INTRNL RADII: .015"		GRADE		RAW MATERIAL		PART NO	
1 MAX OD INCREASED TO 60"				MAR 19/13		TWR				REV 1	
REV REVISION DESCRIPTION				DATE		MADE BY				SCALE 1:16 DO NOT SCALE FROM DRAWING	
THE INFORMATION CONTAINED IN THIS DRAWING IS THE SOLE PROPERTY OF LJ WELDING & MACHINE, ANY REPRODUCTION IN PART OR WHOLE WITHOUT WRITTEN PERMISSION OF LJ WELDING & MACHINE IS STRICTLY PROHIBITED										SHEET 1 OF 3	
APEGGA PERMIT NUMBER: P9801				WWW.LJWELDING.COM		BREAK ALL SHARP CORNERS					